

(It is preferred that the Bid Response use this Form, however, the City reserves the right to accept Bids which provide the necessary information without using this form)

RFP # 20-09 TOUCHLESS BATHROOM & KITCHEN FIXTURES

I, Jeff Deason, hereby representing
(Agent Submitting RFP)

Lexington Plumbing, have read and reviewed the attached specifications.
(Firm or Company)

I state the hereby offer meets or exceeds all requirements. Please note that Exhibit 1 and all other required information must be attached.

Lexington Plumbing
Company Name

1620 Troost Ave.
Address

Kansas City MO 64108
City/State/Zip

816-231-2254
Telephone

44-0524636
Tax ID No.

Jeff Deason
Authorized Person (Print)

[Signature]
Signature

Project Manager
Title

6/23/20
Date

Jeff@lexingtonplumbing.com
E-Mail Address

State the name, address and telephone number of not less than three (3) customers for whom the Contractor has performed similar Service within the last two (2) years as well as all license information for running said display:

Garman - 1200 E. 151st St, Olathe KS 913-549-8817

Fed-Ex - 22101 W 167th St, Olathe KS 913-603-6019

Burns + McDonnell - 9400 Ward Parkway, KCMO 816-898-1597

A chart itemizing the fixture counts by location is provided below.

- Counts provided in **blue** refer to removal and replacement of existing fixtures.
- Counts in **green** refer to desired fixture additions, if possible.
- For reference, counts provided in **red** indicate where a touchless fixture is already installed and will not need replacement.

Prospective Bidders are encouraged to visit the locations of the proposed work so as to confirm the scope, exact location, and exact fixture counts for this project. Please contact the City Parks Director at (816) 532-8130 to set up an appointment, which are available Monday through Friday between the hours of 8:00 A.M. and 3:00 P.M.

Location	Toilets	Urinals	Faucets	Soap Dispensers	Hand Dryers	Paper Towel Dispensers	Drinking Fountains
Senior Center Kitchen	-	-	^	1	-	1	-
Senior Center Restrooms	3	1	4	1/1	2	-	-
City Hall Kitchen	-	-	^	1	-	1	-
City Hall Restrooms	3	1	2	2	2	-	1
Parks Building Restroom	1	-	1	1	1	-	-
Streets Building Restroom	1	1	-	1	1	-	-
Water Plant Restroom	1	-	1	1	1	-	1
Water Plant Lab	-	-	*	1	1	-	-
Wastewater Plant Restroom	2	-	2	2	2	-	-
Wastewater Plant Lab	-	-	*	1	1	-	-
Courtyard Park Restrooms	4	2	2	2	1	-	-
Heritage Park Restrooms	3	1	2	2	2	-	1
Spillway Park Restrooms	7	2	6/2	6	4	-	1
Ball Field Restrooms	6	2	7/1	6	4	-	-
Campground Restrooms	7	1	10	8	4	-	-

^ The Senior Center and City Hall kitchens have manual sink faucets which will not be replaced with automatic faucets.

* The Water and Wastewater Plants' Labs have manual faucets where an exact flow of water must be attained over a certain period of time for testing. These manual faucets will not be replaced with automatic faucets.

The above said Company shall provide the materials and services clean up, and insurance requested for the goods and services of RFP #20-09 for a cost to the City of Smithville as follows:

Item Description	Bid Price
(1) Senior Center	\$ 8,085. ⁰⁰
(2) City Hall, Parks Building, Streets Building, Water Plant, and Wastewater Plant	\$ 26,918. ⁰⁰
(3) Parks Restrooms	\$ 72,654. ⁰⁰
(4) All	\$ 107,657. ⁰⁰
(1) And (2)	\$ 35,003. ⁰⁰
(1) And (3)	\$ 80,739. ⁰⁰
(2) And (3)	\$ 99,572. ⁰⁰

**Afwall® Millenium™ FloWise® Elongated
Flushometer Toilet LESS EverClean®**

- Wall-mounted flushometer valve toilet
- Vitreous china
- Conventional glaze
- High Efficiency, Low Consumption. Operates in the range of 1.1 gpf to 1.6 gpf (4.2 Lpf to 6.0 Lpf)
- Meets definition of HET (High Efficiency Toilet) when used with a high efficiency flush valve (1.1 gpf - 1.6 gpf or 1.28/1.1 gpf dual flush)
- Maximum Performance (MaP) score of 1,000 grams at 1.1 gpf - 1.6 gpf
- Condensation channel
- Concealed trapway design
- Elongated bowl
- Powerful direct-fed siphon jet action
- 1-1/2" inlet spud
- Fully-glazed 2-1/8" trapway
- 10" x 12" water surface area
- Tested to support static weight load of 1,000 lbs. (454 kg)

- ☐ **2257.101** Elongated bowl only, top spud
- ☐ **2633.101** Elongated bowl only, top spud with slotted rim for bedpan holding
- ☐ **2634.101** Elongated bowl only, back spud

System MaP* Score:

- 1,000 grams of miso @ 1.1 gpf to 1.6 gpf when used with an American Standard flush valve

* Maximum Performance (MaP) testing performed by IAPMO R&T Lab. MaP Report conducted by Veritec Consulting, Inc. and Koeller and Company.

Component Parts:

- ☐ **047007-0070A** Inlet Spud (furnished with bowl)

Nominal Dimensions:

660 x 356 x 381mm
(26" x 14" x 15")

Recommended working pressure—between 25 psi at valve when flushing and 80 psi static

Fixture only, less seat, bolt caps, and flushometer valve

Compliance Certifications -

Meets or Exceeds the Following Specifications:

- ASME A112.19.2/CSA B45.1 for Vitreous China Fixtures



SEE REVERSE FOR ROUGHING-IN DIMENSIONS

To Be Specified:

- ☐ Color: ☐ White
- ☐ Seat:
 - ☐ American Standard #5901.100 Heavy duty open front less cover
 - ☐ American Standard #5905.100 Extra heavy duty open front less cover
- ☐ Flushometer Valve:
 - ☐ 1.6 gpf:
 - ☐ Sensor-Operated: American Standard Selectronic® DC Power #6065.161.002 (Top Spud)
AC Power #6067.161.002 (Top Spud)
 - ☐ Manual: American Standard #6047.161.002 (Top Spud)
 - ☐ 1.28 gpf:
 - ☐ Sensor-Operated: American Standard Selectronic® DC Power #6065.121.002 (Top Spud)
AC Power #6067.121.002 (Top Spud)
 - ☐ Manual: American Standard #6047.121.002 (Top Spud)
 - ☐ 1.6 / 1.1 gpf Dual Flush:
 - ☐ Sensor-Operated: American Standard Selectronic® DC Power #6065.761.002 (Top Spud)
AC Power #6067.761.002 (Top Spud)
 - ☐ 1.28 / 1.1 gpf Dual Flush:
 - ☐ Sensor-Operated: American Standard Selectronic® DC Power #6065.721.002 (Top Spud)
AC Power #6067.721.002 (Top Spud)



MEETS THE AMERICANS WITH DISABILITIES ACT GUIDELINES AND ANSI A117.1 REQUIREMENTS FOR ACCESSIBLE AND USABLE BUILDING FACILITIES - CHECK LOCAL CODES.

- When installed so top of seat is 432 to 483mm (17" to 19") from the finished floor.



ENVIRONMENTAL
PRODUCT
DECLARATION



When used with
1.1 or 1.28 gpf
toilet flush valves

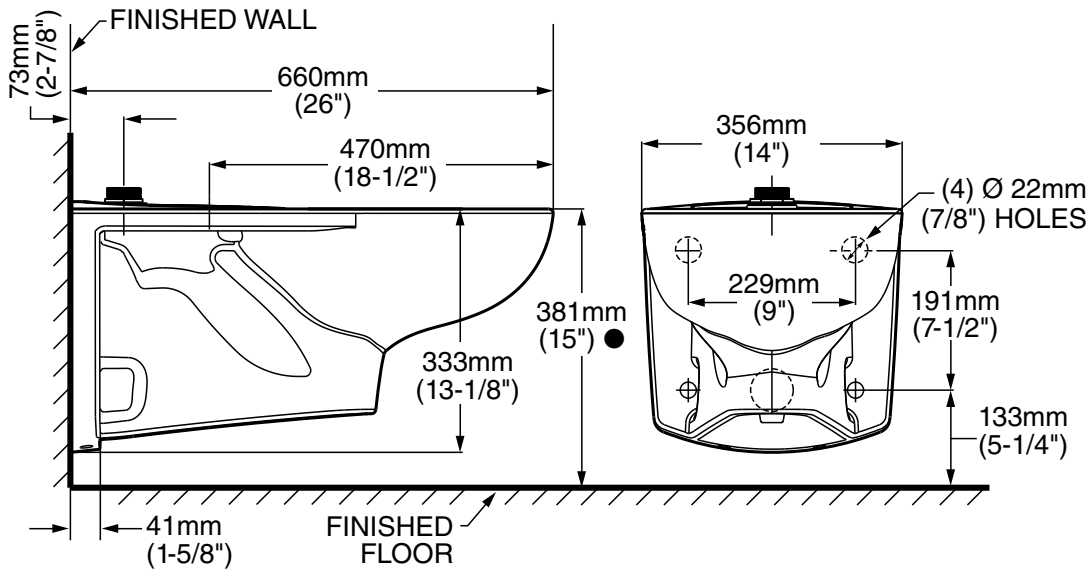


ADA
COMPLIANT

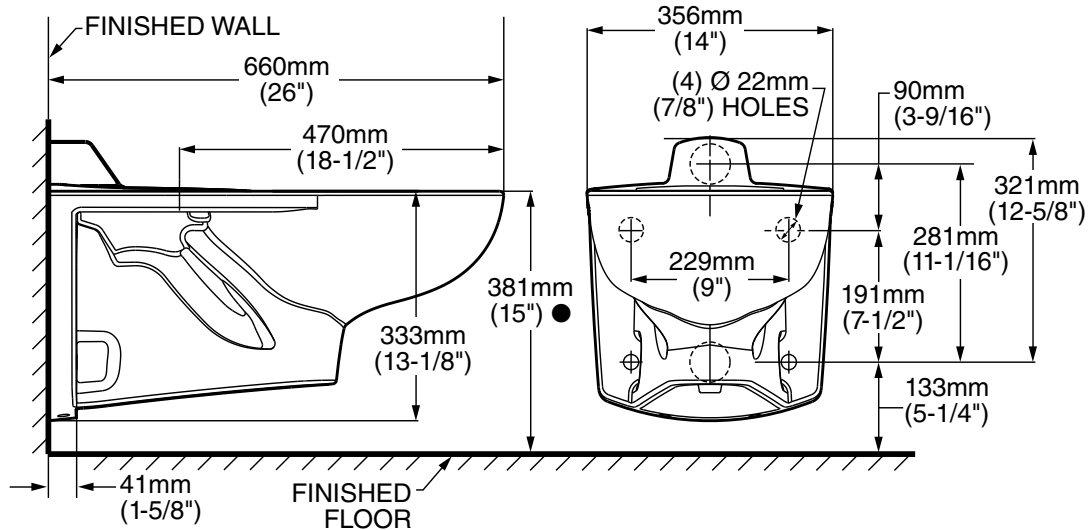


WATER
EFFICIENT

2257.101/2633.101



2634.101



NOTES:

● Toilet designed to meet ADA accessibility standards when top of seat height set at 432 to 483mm (17\" to 19\") from finished floor.

PRODUCT 2257 SHOWN. 2366 SAME EXCEPT WITH SLOTTED RIM FOR BED PAN HOLDING.

WASTE OUTLET SEAL RING MUST BE NEOPRENE OR GRAPHITE-FELT (WAX RING NOT RECOMMENDED).

SUGGESTED 2mm (1/16) CLEARANCE BETWEEN FACE OF WALL AND BACK OF BOWL.

TO COMPLY WITH AREA CODE GOVERNING THE HEIGHT OF VACUUM BREAKER ON THE FLUSHOMETER VALVE, THE PLUMBER MUST VERIFY DIMENSIONS SHOWN FOR SUPPLY ROUGHING.

FLUSHOMETER VALVE NOT INCLUDED WITH FIXTURE AND MUST BE ORDERED SEPARATELY.

CARRIER FITTING AS REQUIRED TO BE FURNISHED BY OTHERS.

PROVIDE SUITABLE REINFORCEMENT FOR ALL WALL SUPPORT.

IMPORTANT: Dimensions of fixtures are nominal and may vary within the range of tolerances established by ANSI Standard A112.19.2.

These measurements are subject to change or cancellation. No responsibility is assumed for use of superseded or voided pages

**Washbrook® FloWise® Universal Urinal
with EverClean®**

- Vitreous china
- **Permanent EverClean® surface inhibits the growth of stain and odor causing bacteria, mold and mildew on the surface**
- Ultra High Efficiency, Low Consumption. Operates in the range of 0.125gpf to 1.0gpf (0.5 Lpf to 3.8 Lpf)
- Flushing rim
- Elongated 14" rim from finished wall
- Washout flush action
- Extended sides for privacy
- 3/4" inlet spud
- Outlet connection threaded 2" inside (NPTF)
- 2 wall hangers
- Fixture only
- Strainer included
- Meets ASME flush requirements at 0.125 to 1.0 gpf

 **6590.001EC** Universal Top spud with EverClean

Nominal Dimensions:

360 x 480 x 664mm
(14-1/8" x 18-7/8" x 26-1/8")

Recommended working pressure – between
20 psi at valve when flushing and 80 psi static

Compliance Certifications -

Meets or Exceeds the Following Specifications:

- ASME A112.19.2-2008/CSA B45.1-08 for Vitreous China Fixtures



SEE REVERSE FOR ROUGHING-IN DIMENSIONS

To Be Specified:

- ☐ Color: ☐ White
- ☐ Flush Valve:
 - 1.0 gpf Flush Valve: Sensor-Operated:
 - ☐ American Standard Selectronic® #6063.101.002 DC Power (Top Spud)
 - 1.0 gpf Flush Valve: Manual-Operated:
 - ☐ American Standard # 6045.101.002
 - 0.5 gpf Flush Valve: Sensor-Operated:
 - ☐ American Standard Selectronic® #6063.051.002 DC Power (Top Spud)
 - 0.5 gpf Flush Valve: Manual-Operated:
 - ☐ American Standard #6045.051.002
 - 0.125 gpf Flush Valve: Sensor-Operated:
 - ☐ American Standard Selectronic® #6063.013.002 DC Power (Top Spud)
 - 0.125 gpf Flush Valve: Manual-Operated:
 - ☐ American Standard #6045.013.002



MEETS THE AMERICANS WITH DISABILITIES ACT GUIDELINES
AND ANSI A117.1 ACCESSIBLE AND USABLE BUILDINGS AND
FACILITIES - CHECK LOCAL CODES.

- When installed so top of rim is 432mm (17") MAXIMUM from finished floor.



When used with
0.125 gpf
urinal flush valve



When used with
0.125 or 0.5 gpf
urinal flush valve

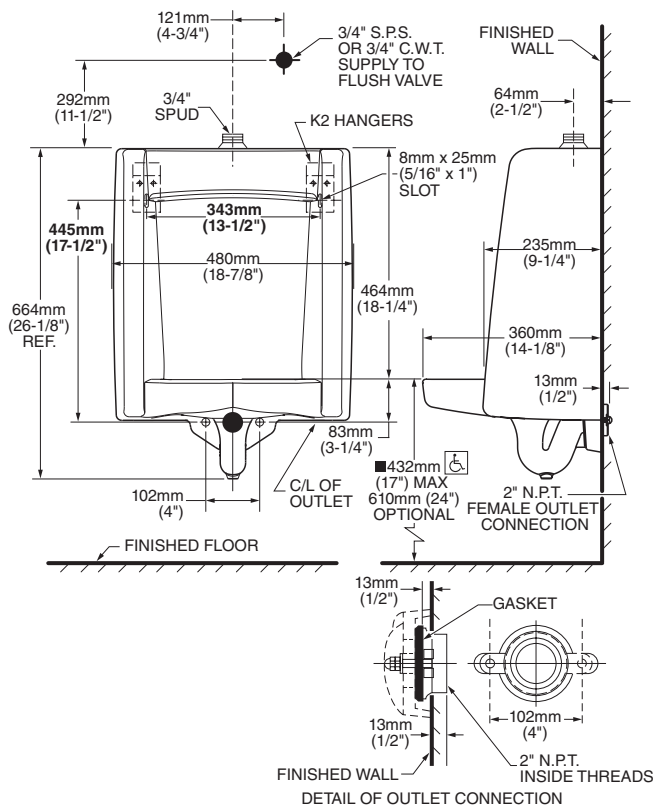



ADA
COMPLIANT



EVERCLEAN

6590.001EC TOP SPUD



 MEETS THE AMERICANS WITH DISABILITIES ACT GUIDELINES
AND ANSI A117.1 ACCESSIBLE AND USABLE BUILDINGS AND
FACILITIES - CHECK LOCAL CODES.
● When installed so top of rim is 432mm (17") MAXIMUM from finished floor.

NOTES:

FLUSH VALVE NOT INCLUDED AND MUST BE ORDERED SEPARATELY.
PROVIDE SUITABLE REINFORCEMENT FOR ALL WALL SUPPORTS.

IMPORTANT: Dimensions of fixtures are nominal and may vary within the range of tolerances established by ANSI Standard A112.19.2. These measurements are subject to change or cancellation. No responsibility is assumed for use of superseded or voided pages.

OPTIONS**Power Type**

Battery

Body Type

Low Integrated Base

Mounting

Deck

Power Supply

Battery (BAT)

Battery + Turbine (TUR)

Sensor Type

Infrared (IR)

Flow Rate

0.5 gpm (2 Lpm) (0.5GPM)

0.35 gpm (1 Lpm) (0.35GPM)

Spray Type

Multi-Laminar (MLM)

Trim Plate

8" (203mm) (8)

Finish

Polished Chrome (CP)

Brushed Nickel (BN)

Brushed Stainless (SF)

Graphite (GR)

Polished Brass (PB)

Control Access

Below Deck

Mixer

Back-Check Tee (TEE)

Below Deck Manual Mixing Valve (BDM)

Below Deck Thermostatic Mixing Valve (BDT)

Mixer Not Included

Special Features

Less Logo (LL)

Compliances & Certifications

ADA Compliant

CEC Compliant

NYC604.4

UPC Low Lead Compliant

cUPC Low Lead Compliant



Image for a standard EBF-650 shown

DESCRIPTION

Optima® Battery-Powered Deck-Mounted Low Integrated Base Body Faucet

FEATURES

Commercial Grade Faucet, ADA Compliant, Cast Brass Spout, Quick Connect Fittings, Integrated Water Shut-off, Wireless Settings Adjustment, On-demand or Metered activation, Hygienic Line Flush, Water Usage and Battery Strength Reporting, Self-adapting Sensor

SMART FAUCET ADDITIONAL OPTIONS

- 24VAC plug adapter, power harness assembly or box mount power supply
- Multi-unit gang adapter kit
- 110V or 230V/6VDC plug adapter
- Special PVD finishes available Brushed Stainless, Brushed Nickel, Polished Brass and Graphite

DOWNLOADS

- [Optima Smart Faucet Below Deck Installation Instructions](#)
- [Faucet Spray Heads Repair and Maintenance Guide](#)
- [ETF-600/EBF-650 Below Deck Repair and Maintenance Guide](#)
- [Additional Downloads](#)

VIDEOS

- ▶ [Optima Faucet App](#)
- ▶ [Sloan Optima Below Deck Faucet](#)
- ▶ [PVD Special Finishes](#)

Sloan 10500 Seymour Ave, Franklin Park, IL 60131

Phone: 800.982.5839 • Fax: 800.447.8329 • sloan.com

ASME A112.18.1 Compliant
BREEAM Materials Credit
BREEAM Water Credit
EPD
Green Globes Materials & Resources Credit

NOTES

For product line drawings, [view model-specific spec sheets](#).

All information contained within this document subject to change without notice.

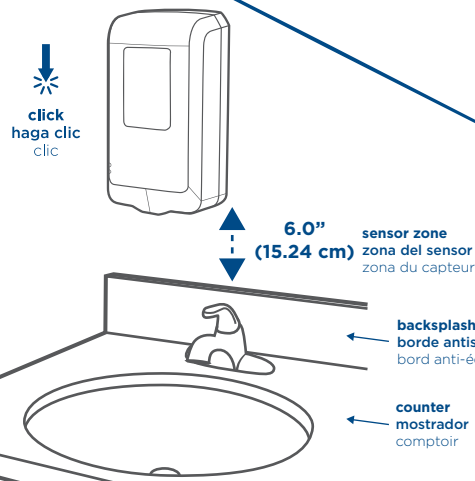
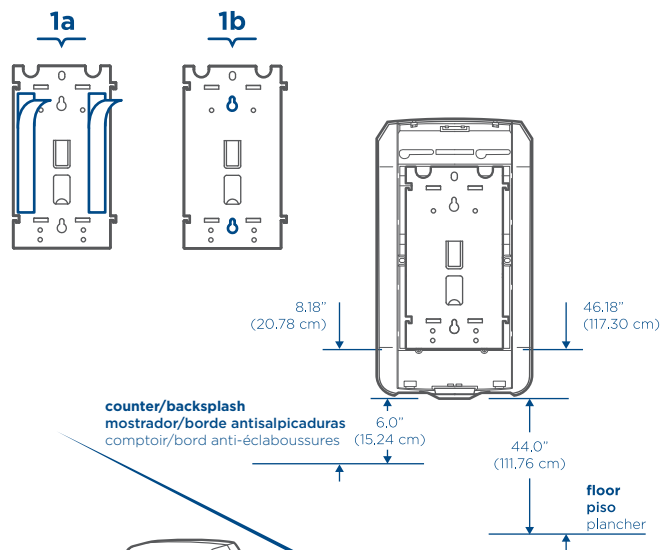
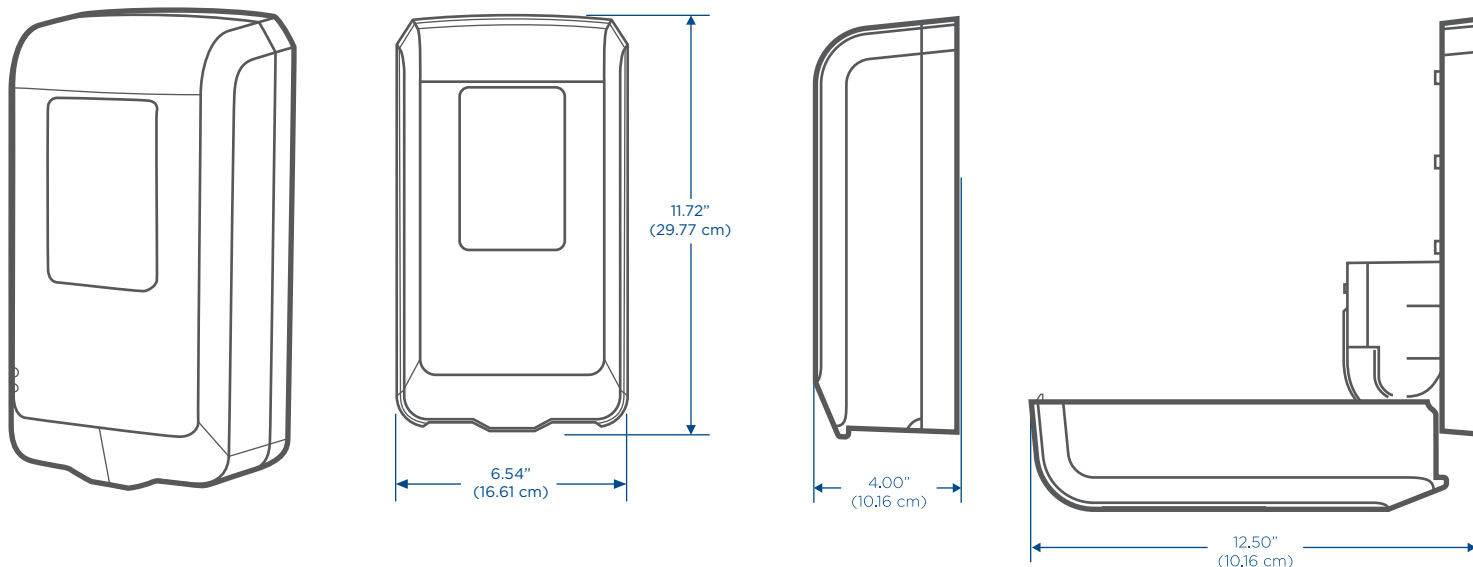
[Find a matching soap dispenser](#) for this faucet.

[Find a compatible sink](#) for this faucet.



Specification Sheet: 53590

Pacific Blue Ultra™ Automated Soap and Sanitizer Dispenser



Weight: 3.1 lbs

Specifications: Impact resistant plastic, GP combo key, four D-cell batteries.

Mounting: Install dispenser using provided mounting bracket and adhesive strips (step 1a) or hardware, not included, (step 1b).

1a. Clean bracket and mounting surface with alcohol pad before adhering tape to bracket and positioning on wall. Press bracket firmly to wall for 30 seconds. NOTE: Adhesive must cure for 1 hour before attaching dispenser.

1b (Recommended). Position bracket and mark holes using keyhole locations in bracket and illustrated in "1b" above as a template. Drill holes and attach bracket using appropriate screws and anchors, not included.

2. Align dispenser on bracket and gently push downward until it clicks into place.

Mounting should comply with ADA guidelines. Compliance is the responsibility of the installer.

CODE NUMBER

3366128

DESCRIPTION

Sloan Optima® Air Sensor-Operated Wall - Surface - ADA Hand Dryer
EHD-701 110/120V, Sloan Optima® Air Sensor-Operated Wall -
Surface - ADA Hand Dryer.

DETAILS

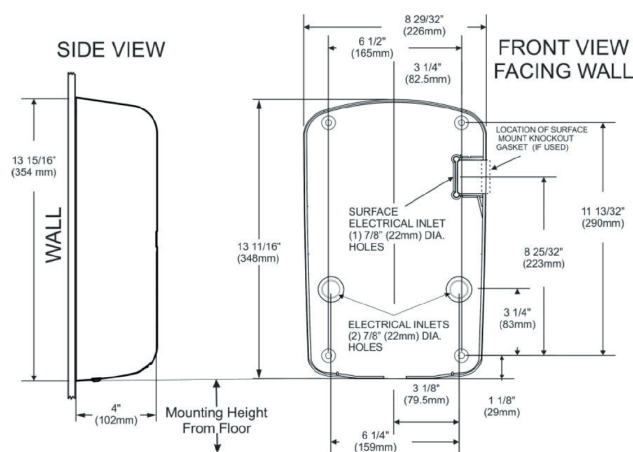
- Finish: Polished White (PW)
- Voltage: 110/120V
- Wattage: 50/60Hz
- Amperage: 7.0-7.7
- Mounting: Wall - Surface - ADA
- Power Type: Hardwired
- Depth: 4" (102mm)
- Height: 13 93/100" (354mm)
- Width: 9 39/250" (233mm)

FEATURES

- Hygienic hand drying solution
- 14 second dry time
- Electric Specifications: 110-120V – 7.0-7.2 Amps, 770-915 Watts, 50/60 Hz
- Meets ADA requirements without the need of a recess kit
- Adjustable speed and sound (High-Low)
- Adjustable Heat (High-Low-Off)
- 95% cost savings vs. paper towels
- Weight: 8-10 lbs.
- Vandal resistant cover design
- Suggested Mounting Heights for Ideal Performance (from floor to bottom of dryer): Men: 45" (114 cm), Women: 43" (109 cm), Teenagers: 41" (104 cm), Children: 35" (89 cm), ADA: 37" (94 cm).
Note: When mounting for any user ensure that it is mounted below the 48" ADA Maximum
- Available in Polished White and Brushed Nickel
- 35-second lockout feature if hands are not removed
- Externally visible Red LED light that flashes error codes to assist in troubleshooting and identify if filter has been clogged
- Virtually maintenance free
- Air temperature of up to 141°F (61°C) at a 72°F (22°C) ambient room temperature at the hands (4 inches [102 mm] below air outlet).
- Quantity Recommendations: 1 dryer for every 2 sink stations is sufficient for most applications. For high traffic applications we suggest 1 dryer per sink station.
- Variations: Available in 2 finishes/colors
- Optional Add Ons: Wall Guards (White, Black, Stainless)

DOWNLOADS

- [OPTIMA AIR™ HAND DRYER EHD-700 SERIES](#)
- [Additional Downloads](#)



COMPLIANCES & CERTIFICATIONS



STATE OF CALIFORNIA
Proposition 65

(BAA Compliant, cUL Certified, UL Certified, Proposition 65)

RECOMMENDED SPECIFICATION

Sloan Optima Air® Sensor Operated ADA Hand Dryer.
120V/110V White Finish.

NOTES

All information contained within this document subject to change without notice.

PRODUCT SPECIFICATIONS

Elkay ezH2O® Bottle Filling Station with Single ADA Cooler, Non-Filtered Non-Refrigerated Light Gray. Features shall include Mechanically Activated, Hands Free, Green Ticker™, Laminar Flow, Antimicrobial, Real Drain. Furnished with Flexi-Guard® Safety Bubbler. Electronic Bottle Filler Sensor With Mechanical Front And Side Bubbler Pushbar activation. Product shall be Wall Mount (On Wall), for Indoor applications, serving 1 station(s). Unit shall be certified to UL 399 and CAN/CSA C22.2 No. 120. Unit shall be lead-free design which is certified to NSF/ANSI 61 & 372 (lead free) and meets Federal and State low-lead requirements.

Special Features:	Mechanically Activated, Hands Free, Green Ticker™, Laminar Flow, Antimicrobial, Real Drain
Finish:	Light Gray Granite
Power:	115V/60Hz
Bubbler Style:	Flexi-Guard® Safety Bubbler
Activation by:	Electronic Bottle Filler Sensor With Mechanical Front And Side Bubbler Pushbar
Mounting Type:	Wall Mount (On Wall)
Chilling Option:	Non-refrigerated
Full Load Amps	2
Rated Watts:	15
Dimensions (L x W x H):	17-7/8" x 18-1/2" x 39-3/4"
Approx. Shipping Weight:	54 lbs.
Installation Location:	Indoor
No. of Stations Served:	1

- Mechanically-Activated bubbler continues to supply water in event of service disruptions.
- Green Ticker: Informs user of number of 20 oz. plastic water bottles saved from waste.
- Laminar flow provides clean fill with minimal splash.
- Silver Ion Antimicrobial protection on key plastic components to inhibit the growth of mold and mildew.
- Real Drain System eliminates standing water.



AMERICAN PRIDE. A LIFETIME TRADITION.
Like your family, the Elkay family has values and traditions that endure. For almost a century, Elkay has been a family-owned and operated company, providing thousands of jobs that support our families and communities.



Included with Product: Water Cooler (EMABFDWSL), Bottle Filler (EZWSR)

▼ Ships in multiple boxes.

PRODUCT COMPLIANCE

ADA & ICC A117.1
ASME A112.19.3/CSA B45.4
Buy American Act
CAN/CSA C22.2 No. 120
GreenSpec®
NSF/ANSI 61 & 372 (lead free)
UL 399



Intertek



WQA USA



www.GreenSpec.com



Complies with ADA & ICC A117.1 accessibility requirements when installed according to the requirements outlined in these standards. Installation may require additional components and/or construction features to be fully compliant. Consult the local Authority Having Jurisdiction if necessary.

[Installation Instructions \(PDF\)](#)

Electrical components and water system are warranted for 12 months from date of installation. **Warranty pertains to drinking water applications only. Non-drinking water applications are not covered under warranty.**

[Warranty \(PDF\)](#)

OPTIONAL ACCESSORIES

EW3000 - WaterSentry Plus Filter System Kit (Bottle Fillers)
MLP100 - Accessory - In Wall Carrier (Single) for single EZ, LZ, EMABF, LMABF, VRC, LVRC models
98313C - Elkay Cane Apron for EMABF (Gray Granite)

PART: _____ QTY: _____

PROJECT: _____

CONTACT: _____

DATE: _____

NOTES: _____

APPROVAL: _____

In keeping with our policy of continuing product improvement, Elkay reserves the right to change product specifications without notice. Please visit elkay.com for the most current version of Elkay product specification sheets. This specification describes an Elkay product with design, quality, and functional benefits to the user. When making a comparison of other producers' offerings, be certain these features are not overlooked.

IMPORTANT! INSTALLER PLEASE NOTE :

This water cooler has been designed and built to provide water to the user which has not been altered by materials in the cooler waterways. The grounding of electrical equipment such as telephone, computer, etc. to water lines is a common procedure. The grounding may be in the building but may also occur away from the building. This grounding can cause electrical feedback into a water cooler creating an electrolysis which creates a metallic taste or causes an increase in the metal content of the water. This condition is avoidable by installing the cooler using the proper materials as shown below.

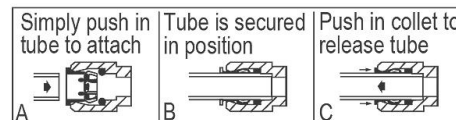
NOTICE

This water cooler must be connected to the water supply using a dielectric coupling. The cooler is furnished with a non-metallic strainer which meets this requirement. The drain trap which is provided by the installer should also be plastic to completely isolate the cooler from the building plumbing system.

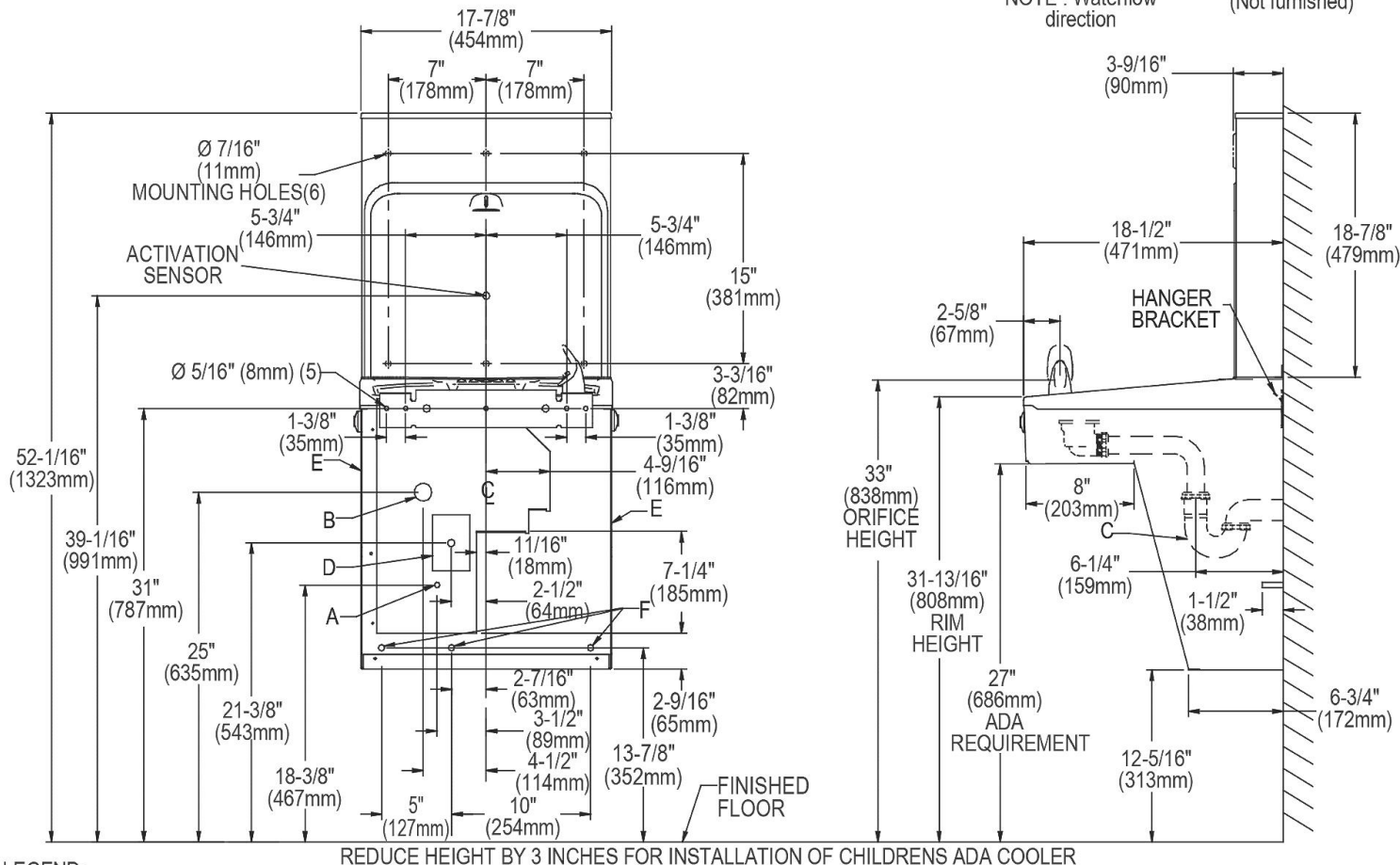
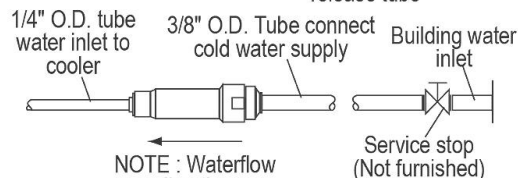
Bottle filler unit on bracket attached to wall by 6 holes (as shown). Water and electrical will connect through pre-punched hole in basin.

These products are designed to operate on 20 psi to 105 psi supply line pressure.

OPERATION OF QUICK CONNECT FITTINGS



Pushing tube in before pulling it out helps to release tube



LEGEND:

A = Recommended Water Supply location. Shut-off Valve (not furnished) to accept 3/8" O.D. unplated copper tube. Up to 3" (76mm) maximum out from wall.

B = Recommended Waste Outlet location. To accommodate 1-1/4" nominal drain. Drain stub 2" (51mm) out from wall.

C = 1-1/4" Trap (not furnished).

D = Electrical Supply (3) Wire Recessed Box Duplex Outlet.

E = Insure proper ventilation by maintaining 6" (152mm) minimum clearance from cabinet louvers to wall.

F = 7/16" (11mm) Bolt Holes for fastening to wall.

NOTE: New Installations Must Use Ground Fault Circuit Interrupter (GFCI).

In keeping with our policy of continuing product improvement, Elkay reserves the right to change product specifications without notice. Please visit elkay.com for the most current version of Elkay product specification sheets. This specification describes an Elkay product with design, quality, and functional benefits to the user. When making a comparison of other producers' offerings, be certain these features are not overlooked.

OPTIONS

Flush Volume

- 1.0 gpf (3.8 Lpf) (1.0)
- 1.5 gpf (5.7 Lpf) (1.5)
- 0.5 gpf (1.9 Lpf) (0.5)
- 0.125 gpf (0.5 Lpf) (0.125)
- 0.25 gpf (0.9 Lpf) (0.25)

Power Type

- Hardwired (HW)

Water Efficiency

- High Efficiency
- Low Consumption
- Water Saver

Bypass

- Dual-Filtered Bypass (DBP)

L Dimension

- 2"-10 3/4" (51-273mm) (2-10-3/4-LDIM)
- 11"-12 3/4" (279-324mm) (11-12-3/4-LDIM)
- 2"-14 3/4" (51-375mm) (2-14-3/4-LDIM)
- 2"-18 3/4" (51-476mm) (2-18-3/4-LDIM)
- 2"-22 3/4" (51-578mm) (2-22-3/4-LDIM)

Override

- Electrical (OR)
- True Mechanical (TMO)

Wall Box

- With (W/BOX)
- Small (SWB)
- Standard (not included, order separately)

Push Button

- C2A (C2A)

Control Stop

- Less (L/STOP)
- 1" Straight (E)
- Ground Joint (GJ)

Vacuum Breaker

- Less (XYV)

Compliances & Certifications

- ADA Compliant
- BAA Compliant
- UL Certified
- cUPC Certified
- BREEAM Water Credit



DESCRIPTION

Royal® Concealed Sensor Hardwired Urinal Flushometer

FEATURES

- Flush volumes start as low as a pint of water
- Water conservation is aided by the ADA-compliant, non-hold-open handle, which, prevents urinal from exceeding intended flush volume
- Flush accuracy is controlled by CID™ technology, also enhancing water efficiency
- Durability is facilitated with high copper, low zinc brass castings for dezincification resistance
- Adjustable tailpiece
- PERMEX synthetic rubber diaphragm with Dual Filtered Fixed Bypass
- Valve body, Cover, Tailpiece and Control Stop shall be in compliance with ASTM Alloy Classification for Semi-Red Brass
- Valve shall be in compliance to the applicable sections of ASSE 1037.

DOWNLOADS

- [Sloan Concealed Installation Instructions](#)
- [Royal ESS Concealed and Exposed Installation Instructions](#)
- [Royal 152/195 ESS TMO \(Spanish\) Installation Instructions](#)
- [Royal 152/195 ESS TMO Installation Instructions](#)
- [Royal 152/195 SWB ESS TMO \(Spanish\) Installation Instructions](#)
- [Royal 140/152/153/195 ESS TMO SWB Installation Instructions](#)
- [Sloan Concealed Spanish Installation Instructions](#)
- [Royal ESS Concealed with Wall Box Installation Instructions](#)

Sloan 10500 Seymour Ave, Franklin Park, IL 60131

Phone: 800.982.5839 • Fax: 800.447.8329 • sloan.com

Green Globes Water Credit
LEED V4 Water Efficiency Credit
Satisfies LEED Credits
WaterSense Listed
cUPC Green Certified

- [Control Stop Repair and Maintenance Guide](#)
- [Flush Connections Flanges Repair and Maintenance Guide](#)
- [Tail Piece Repair and Maintenance Guide](#)
- [Optima ESS Repair and Maintenance Guide](#)
- [Additional Downloads](#)

NOTES

For product line drawings, [view model-specific spec sheets](#).

All information contained within this document subject to change without notice.

VIDEOS

ESS Flushometer

OPTIONS

Flush Volume

- 1.6 gpf (6.0 Lpf) (1.6)
- 3.5 gpf (13.2 Lpf) (3.5)
- 1.28 gpf (4.8 Lpf) (1.28)
- 2.4 gpf (9.1 Lpf) (2.4)

Finish

- Rough Brass (RB)
- Brushed Stainless (SF)

Power Type

- Hardwired (HW)

Water Efficiency

- Low Consumption
- Water Saver
- High Efficiency

L Dimension

- 2"-10 3/4" (51-273mm) (2-10-3/4-LDIM)
- 11"-12 3/4" (279-324mm) (11-12-3/4-LDIM)
- 13"-14 3/4" (330-375mm) (13-14-3/4-LDIM)
- 15 3/4" (400mm) (15-3/4-LDIM)
- 18 3/4" (476mm) (18-3/4-LDIM)
- 19 3/4" (502mm) (19-3/4-LDIM)
- 7"-8 3/4" (178-222mm) (7-8-3/4-LDIM)

Override

- Electrical (OR)
- True Mechanical (TMO)

Wall Box

- With (W/BOX)
- Small (SWB)
- Standard (not included, order separately)

Push Button

- C2A (C2A)

Control Stop

- 1" Straight (E)
- Less (L/STOP)

Vacuum Breaker

- Less (XYV)

Outlet Tube

- Trap Primer (TP)

Adapter

- XL Sweat Solder Adapter Kit (XL)



Image for a standard ROYAL 152 ESS shown

DESCRIPTION

Royal® Concealed Sensor Hardwired Water Closet Flushometer

FEATURES

- Flush volumes start as low as 1.28 gpf/4.8 Lpf
- Water conservation is aided by the ADA-compliant, non-hold-open handle, which prevents toilet from exceeding intended flush volume
- Flush accuracy is controlled by CID™ technology, also enhancing water efficiency
- Integrity of the product is maintained with the vandal-resistant stop cap
- Durability is facilitated with high copper, low zinc brass castings for dezincification resistance
- Adjustable tailpiece
- PERMEX synthetic rubber diaphragm with Dual Filtered Fixed Bypass
- Valve body, Cover, Tailpiece and Control Stop shall be in compliance with ASTM Alloy Classification for Semi-Red Brass
- Valve shall be in compliance to the applicable sections of ASSE 1037.

DOWNLOADS

- [Royal/Sloan/Crown SWB ESS Installation Instructions](#)
- [Royal ESS Concealed and Exposed Installation Instructions](#)
- [Royal 152/195 ESS TMO Concealed Installation Instructions](#)
- [150/152/190/194/195 ES-SM Installation Instructions](#)
- [Royal ESS Concealed with Wall Box Installation Instructions](#)
- [Control Stop Repair and Maintenance Guide](#)
- [Flush Connections Flanges Repair and Maintenance Guide](#)
- [Tail Piece Repair and Maintenance Guide](#)

Special Features

Whitworth Thread (WWT)
Less Logo (LL)

Compliances & Certifications

ADA Compliant
BAA Compliant
UL Certified
cUPC Certified
UPC Certified
Satisfies LEED Credits
WaterSense Listed
cUPC Green Certified
BREEAM Water Credit
Green Globes Water Credit

- [Optima ESS Repair and Maintenance Guide](#)
- [ESS TMO SWB Repair and Maintenance Guide](#)
- [Additional Downloads](#)

VIDEOS

 [ESS Flushometer](#)

NOTES

For product line drawings, [view model-specific spec sheets](#).

All information contained within this document subject to change without notice.